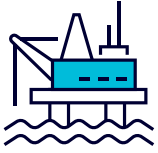




RINA at a Glance



# ENERGY

RINA's energy business helps support the sustainable growth of operators throughout the world to meet growing market demands in oil and gas, power generation (conventional, renewables and power grids) including environmental protection.

The company provides a vast array of engineering and consultancy, testing, inspection and certification services, dedicated to all players of the sector, helping operators to meet sustainability targets as well as ensuring compliance to the highest standards of engineering and construction.

## OIL&GAS SERVICES

- Geosciences
- Environment, HSE & Permitting
- Logistics
- Advanced Numerical Simulation
- Pre-FEED, FEED & Detail Design
- Project Management Consulting
- Operation & Maintenance Engineering
- Asset Integrity Management
- On Site Assistance
- Construction & Commissioning Management
- Inspection, Expediting and Material Management
- Vendor Qualification and Auditing
- QA/QC and Site Supervision
- Asset Classification or Certification

## POWER SERVICES - CONVENTIONAL, RENEWABLES, TRANSMISSION & DISTRIBUTION

- Power plant and equipment design
- Architect/Owner's engineering
- Power systems planning
- Grid connection studies
- Protection studies
- HVAC & HVDC services
- Power systems software
- Earthing & lightning protection
- Construction monitoring and project management
- Full technical due diligence
- Environmental and social studies and permitting
- Sustainability studies
- Inspection, Expediting and Material Management
- Vendor Qualification and Auditing
- QA/QC and Site Supervision

**30,000+ Km**

Inspected and supervised pipelines

**250+**

Certified and requalified platforms

**100+**

LNG projects

**160 GW+**

Installed capacity plant engineering services

**3M+** hours of inspection

**Coral South FLNG Project**

Certification and Technology validation

**AIM Provider for ENI Group**

Worldwide frame Agreement

**Aramco approved Service provider**

Vendor Inspection and Expediting

**Technical due diligence on 1,4 GW investment**

Global solar larger portfolios worldwide

**1M+** hours of engineering





# TRANSPORT & INFRASTRUCTURE

RINA provides dedicated, bespoke services for the infrastructure, transport and logistics markets including ports and marine, railways, roads and highways, buildings (hospital, residential, retail logistics and historical buildings), landscape, dams and hydraulic works, plant building and environmental engineering works; helping enterprises become more competitive and to achieve sustainable growth. The company delivers comprehensive, proven, dependable and efficient third party testing, inspection, certification, design, consultancy and owner engineering services to a full range of Public Authorities, Contractors, Developers, Real Estate and Property Companies, Insurances Companies, Investors and Owners.

## SERVICES

- Studies, Conceptual Design & Feasibility
- Design Services
- PMC / Construction Supervision
- Technical Advisory
- Asset Integrity Management (AIM+)
- Environmental Impact Assessment
- Operation and Maintenance
- Decommissioning
- Logistics and Supply Chain
- Railway Certification & Testing
- Design Verification
- Site Supervision
- Technical Inspection on Buildings, Infrastructure & Railways
- Energy & Sustainability Audits in Real Estate
- Green Building Certification
- PPP - Public Private Partnership and PF - Project Finance Independent Verification

**76,000sqm Libeskind Tower Milan**  
LEED Administrator and Commissioning

**1.5 B\$ Turkmenbashi sea port**  
Design verification and independent checking

**17.3km Genoa New Highway**  
Design verification and independent checking

**112,000sqm Hudson Yards (NY)**  
Procurement inspections - welding and NDT

**695K+** sqm sustainable buildings

**30+ Mass Transit Systems**  
PMC / Technical Advisory Services

**150m Zarema May-day dam**  
Design review and construction supervision

**4 new commercial ports in Kuwait**  
Masterplan

**2,680m Osman Gazi suspended bridge**  
Structural Health Monitoring

**200K+** hours of engineering







# MARINE

Ship classification has been at the core of the RINA business since its inception. Today, this business sector represents 28% of the RINA's turnover, making it one of the top ranking marine classification societies in the world. RINA is a founding member of the International Association of Classification Societies (IACS), formed in 1968. The RINA fleet is recognized by approximately 116 international flag authorities. RINA integrated services for the complete shipping cycle including design, building, shipyard management, inspection and testing of materials / components and regular inspections to maintain the class are used by freight, ferries, ro-ro, passenger ships, yachts, cruise ships, navy, LNG and other specialist carrier vessels.

## SERVICES

- Classification and Statutory Services
- Certification of Material, Product & Personnel
- Marine Technical Advisory Services

**44.0M GT**

Classed ships

**6.400**

Classed ships

**5.2M+ GT**

New building projects worldwide

**RINA Cube** for Marine Fleet Operation Center  
& Performance Management

**400+** surveyors worldwide

**250**

New yacht projects worldwide

**1<sup>st</sup> World ranked**

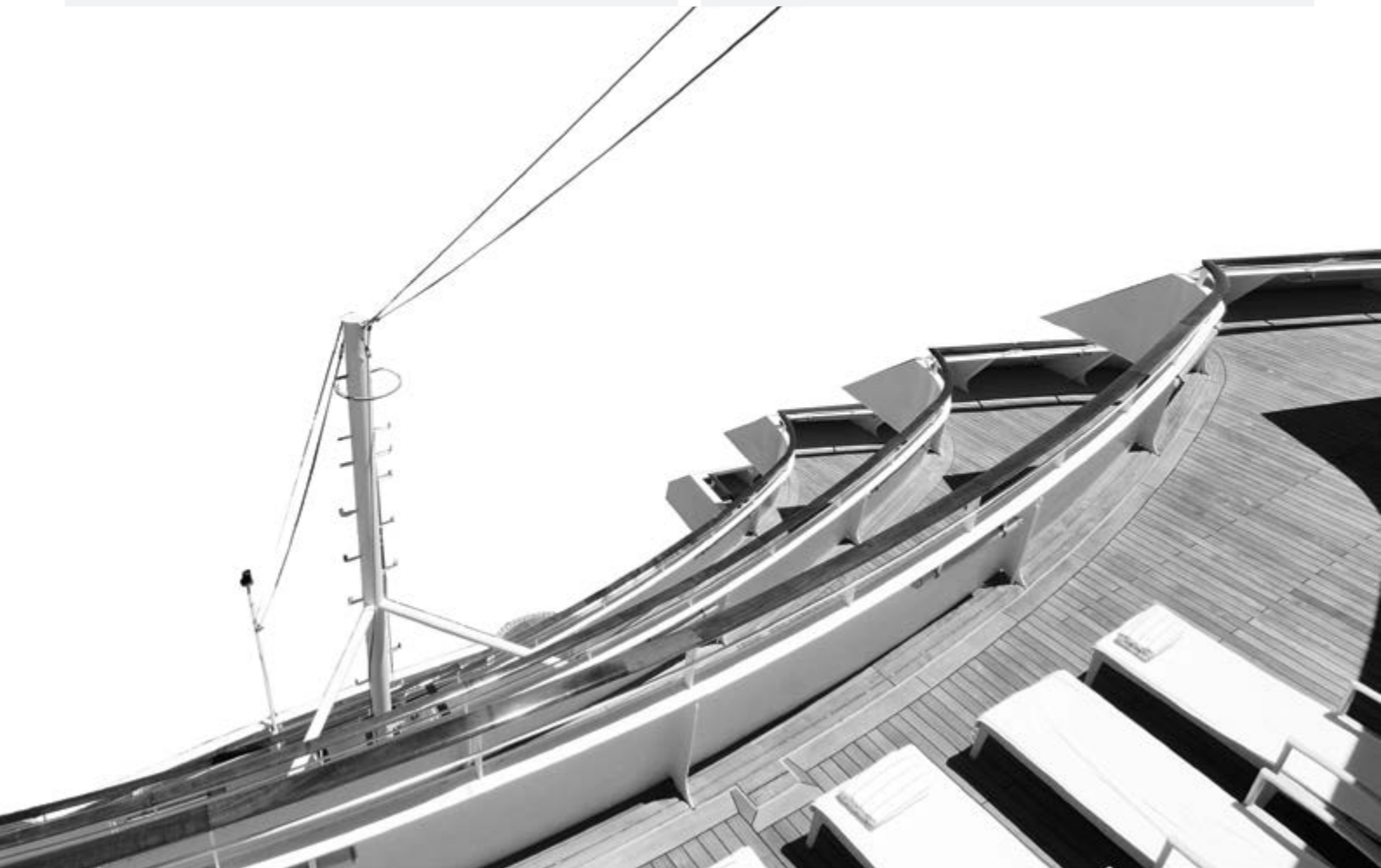
For Ro-Ro Passenger Classification

**AIDANova**

Delivery of first LNG fueled cruise ship

**1<sup>st</sup>** Digital Ship Additional Class Notation

**116** Flag Administrations





# CERTIFICATION

RINA third party certification services give an independent guarantee of compliance with associated regulatory standards.

They are designed to protect enterprises across all aspects of projects, operations, logistics and legislation covering a wide range of areas including climate change, management systems (quality, environmental, health and safety, social accountability), product safety and quality, environmental sustainability, social accountability, food certification, personnel, railways and green buildings.

## OUR OPERATIONAL AREAS

- Certification and Testing
- Food, Health & Value Chain
- Environment, Sustainability & Climate Change

## SERVICES

- Management Systems Certification
- Product Certification
- Personnel, Processes & Project Certification
- Statutory Inspection & Testing of Equipment

**140+**

Certification schemes

**121+**

DOP, IGP, STG certificates

**1,786+**

Companies certified with Food schemes

**29,000+**

Management systems certificates

**1,800+** auditors worldwide

**36,000+**

Product certificates

**70,000**

Personnel certificates

**121,000**

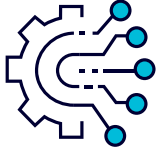
Laboratory tests

**International development**

China, Germany, Poland, India

**47,000+** men/days





# INDUSTRY

RINA's mission is to support clients in boosting their competitiveness where materials, technologies and Innovation play a critical role, providing confidential expertise for many types of strategic industrial initiatives. The experience RINA has delivered in high demanding sectors such as space and defence, has given the Company the unique capability to be an important partner in strategic development programmes to governments and public bodies in addition to supporting industrial operators in project development. The engineering services cover the entire project lifecycle, in accordance with engineering and military standards. As an independent organisation, we provide verification and validation as well as product/software assurance and reliability services.

## MATERIALS, TECHNOLOGY & INNOVATION SERVICES

- Innovation & Business Strategy
- Product Design & Engineering
- Materials and Product Development
- Manufacturing Process Innovation & Smart Manufacturing
- Material Selection & Qualification
- Product & Process Sustainability
- Engineering Critical Assessment (ECA)
- Life Cycle Assessment
- Performance Assessment
- Condition Assessment & Forensics

## SPACE & DEFENCE SERVICES

- Systems and Integration Engineering
- Combat Systems and Physical Integration Design
- Simulation, Test and Trials Support
- Software Development
- Electromagnetic Compatibility (EMC)
- Cyber and Physical Security Design
- Integrated Logistic Support Management and Engineering
- P3M, Management Services & Decision Support tools
- Financial, Functional and Enterprise Modelling and Simulation
- Training & Learning Solutions

**500+ M€**

Added value generated by our projects

**12+**

High quality steel and market leader clients

**300+**

Forensic and failure analyses

**140+**

Successful innovation projects

**500k** hours/year

**10+ B€**

Added value of the Space and Defence programme

**240,000**

E-learning users from the UK Defence sector

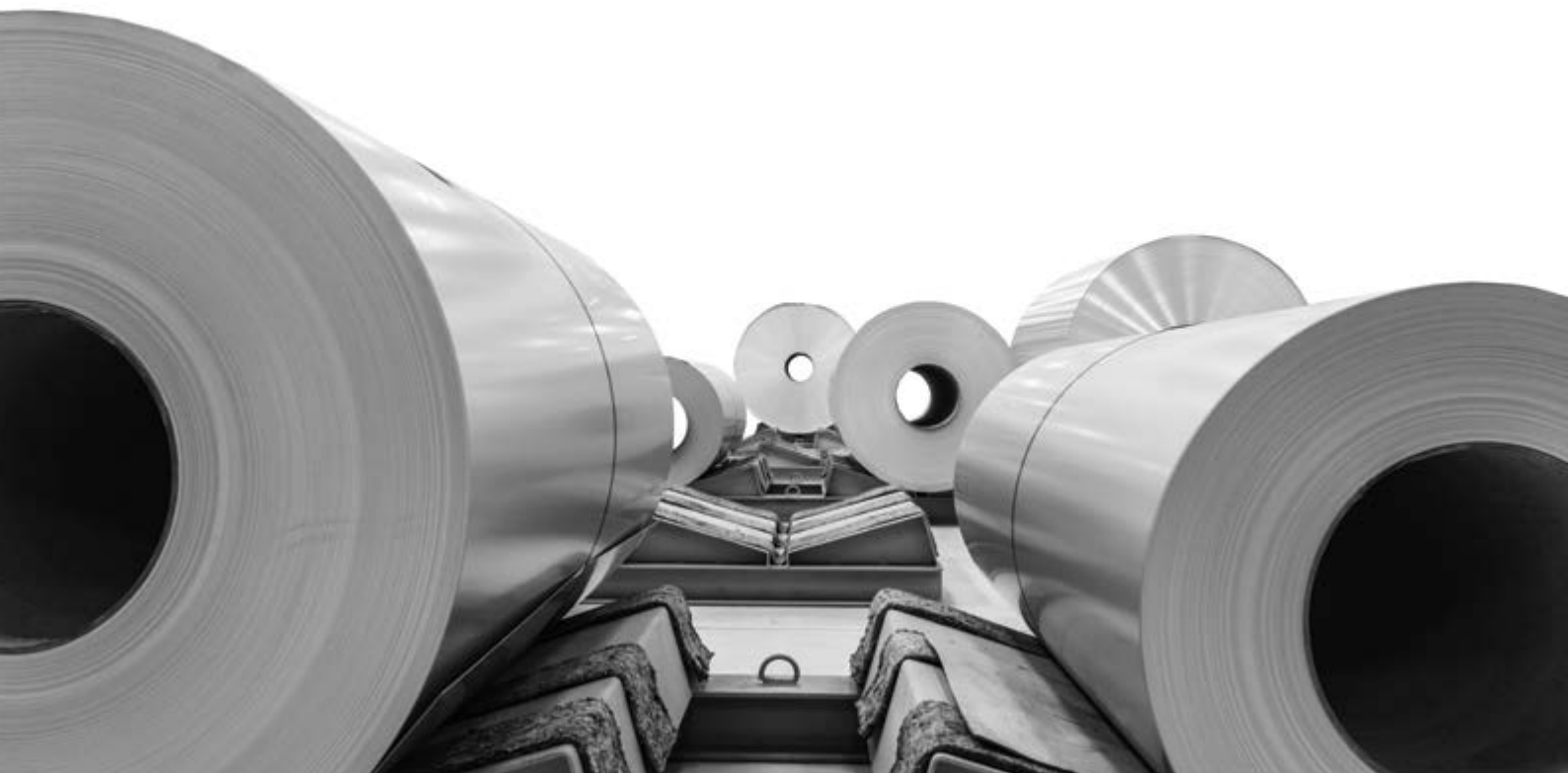
**50+**

Naval combat systems' integration studies

**60+**

Cyber security assessments

**300K+** hours of engineering per year for Space and Defence sector





**3,700+** people  
worldwide



**170** offices in  
**65** countries



**440 M €**  
Turnover

Tailored solutions for over 150 years

## Industry 4.0

Industry 4.0 incorporates many key technical innovations including the use of robots, drones, Big Data, virtual realities and additive manufacturing

- 10+ Independent Safety Audits on UAV platform types
- 40+ Smart Manufacturing projects

## Sustainability

- Signatory of the United Nations Global Compact since 2016
- We embed sustainability concepts into our business and support Clients in enhancing their projects' value

## Renewables and energy storage

- Owner's engineering on solar and wind assets in Africa, America and Australia
- Independent engineering on innovative gas engines and energy storage systems in UK

## Defence

New opportunities have been launched for research activities, in particular in the areas of security and defence

- 20K+ hours in Security Engineering
- 20+ Category A programmes (>440M €) related to the UK Ministry of Defence

## Human Capital

Development of new personnel certification schemes and new training courses relevant to any business area

- 70,000+ Personnel certificates
- 200+ Marine training courses

## Funded Research

- 210+ Industrial innovation Regional, National and EU funded projects, delivered in the past 10 years
- 300+ M€ Global value of industrial innovation EU funded projects, delivered in the past 10 years

## Smart ships

A wide range of tools and services to support the Shipping Industry in the development of future ships:

- LNG fueled & battery powered ships
- Cyber security
- Big data analytics
- Remote surveys

## GOVERNANCE

RINA consists of the Holding Company RINA S.p.A. that controls and coordinates the two main operational companies RINA Services S.p.A. and RINA Consulting S.p.A.

The main international, EU and national accreditation rules and regulations which define the duties and responsibilities of the conformity assessment bodies highlight the importance for the same to guarantee their impartiality and independence.

The main objective of conformity assessment is in fact to instill trust in the interested parties, the so-called "stakeholders", who include, depending on the type of assessment, clients, authorities, market and final users.

RINA has adopted a governance model that defines and governs the relationships between the various activities of the Group, in the light of safeguarding impartiality and preventing conflicts of interest, so as to allow the various companies to provide their services, while ensuring compliance with the applicable accreditation and authorisation rules.



info@rina.org  
rina.org

RINA Corporate Image®

